

# Burford® Smart Seeder/Topper

MODEL 9840 - RIGHT HAND, MODEL 9940 - LEFT HAND



Accurate topping coverage and seed savings are a given from operator to operator by automating the setup process.

LEFT HAND MODEL 9940  
SHOWN WITH  
OPTIONAL CONVEYOR



With the one-touch setup, the system automatically adjusts its settings to provide a more accurate coverage and seed savings. Pan guides, sensor location, seed quantity, hopper height, nozzle height and mandrel recognition are fully automatic.

- Automatic Setup for Each Product
- Improved Sanitation
- Operator Side Mandrel Drive
- High Quality Split Water Spray System
- Stainless Steel Construction
- Even Seed & Topping Distribution
- Applies Wide Variety of Toppings
- Quick Change Mandrel

PRACTICAL SOLUTIONS THROUGH INNOVATIVE TECHNOLOGIES

**Burford®**  
(bc)

**CALL US TODAY 1-877-BURFORD (287-3673)**

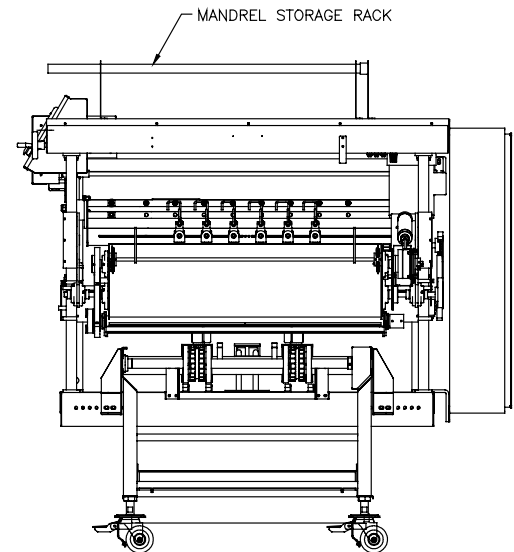
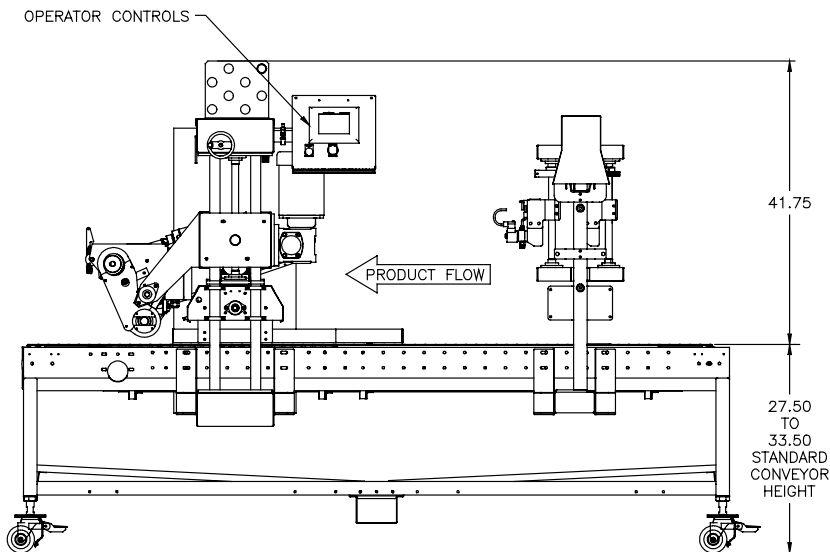
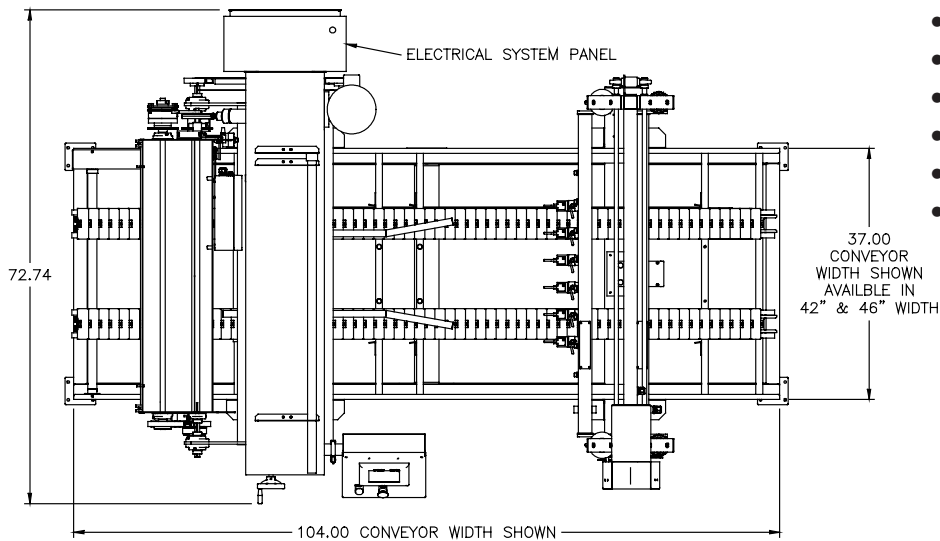
# MODEL 9940 SMART SEEDER/TOPPER

WITH OPTIONAL  
937L-104 CONVEYOR



## Options

- Alternate Conveyor Elevations
- Alternate Conveyor Length & Width
- Automatic Seed Filling System
- Low Level Alarm
- Alternate Electrical Specifications
- Hopper Agitator for Oats, Bran, Etc.
- Air Vibrator Kit



## SPECIFICATIONS

### ELECTRICAL:

110 VOLTS, 60HZ, 1 PHASE (STANDARD)

### AIR:

90 PSI @ .25 CFM STANDARD .70 MAX WITH OPTIONS

**MAX. DISPENSE WIDTH:** 40"

### MOTOR:

1/3HP, 230/460V, 3PH, 56C